

NO.	DATE	DESCRIPTION	BY
1	1-3-19	OWNERS REVISION	DJH



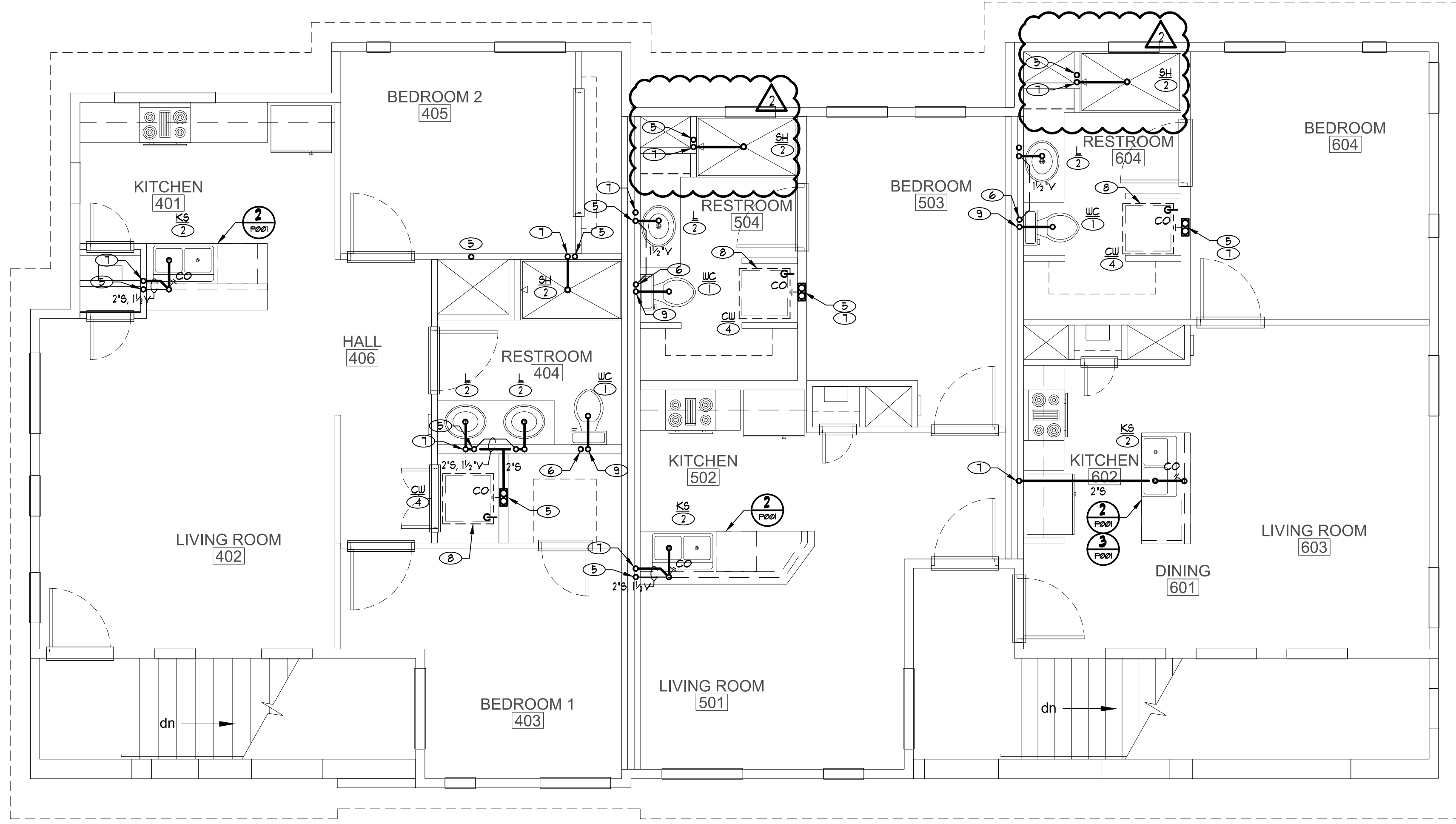
7010 Easy Wind Dr. Ste 200
Austin, TX 78752
512.899.3100

www.designopa.com



NOTES:

- ① WC, 3"Ø, 2"V.
- ② L, SH, 2"Ø, 1½"V.
- ③ KS/DU, 2"Ø, 1½"V. OR INSTALL 1½" MINI STUDOR VENT.
- ④ 2"Ø, 1½"V. TO DUEL CLOTHES WASHER BOX.
- ⑤ 1½"VTR. MAINTAIN 10 FT. CLEARANCE TO FRESH AIR INTAKES.
- ⑥ 2"VTR. MAINTAIN 10 FT. CLEARANCE TO FRESH AIR INTAKES.
- ⑦ 2"Ø, DOWN TO BELOW.
- ⑧ 1½" DRAIN PIPING FROM CLOTHES WASHER DRAIN PAN ROUTE TO EXTERIOR.
- ⑨ 3"Ø, DOWN TO BELOW.
- ⑩ GAS TANKLESS WATER HEATER. ROUTE CONCENTRIC VENT UP THRU ROOF. MAINTAIN 10 FT. CLEARANCE TO FRESH AIR INTAKES.



NORTH
SECOND FLOOR - PLUMBING PLAN (WASTE & VENT)
 SCALE: ¼" = 1'-0"
 P102

251 S. TEXAS
 HENDERSON, NEVADA

©2018 OPA Design Studio. All Rights Reserved.
 These designs / drawings are the sole property of the architect, OPA Design Studio. They may not be reproduced in any form, by any method, for any purpose without previous written permission from the Architect.

JOB NO.:	201724-C
PHASE:	CD
DRAWN:	SO, LE
CHECKED:	SO
DATE:	10/22/2018

P102