

NO.	DATE	DESCRIPTION	BY
1	1-3-19	BUILDING DEPT. COMMENTS	DJH
2	1-3-19	OWNERS REVISION	DJH



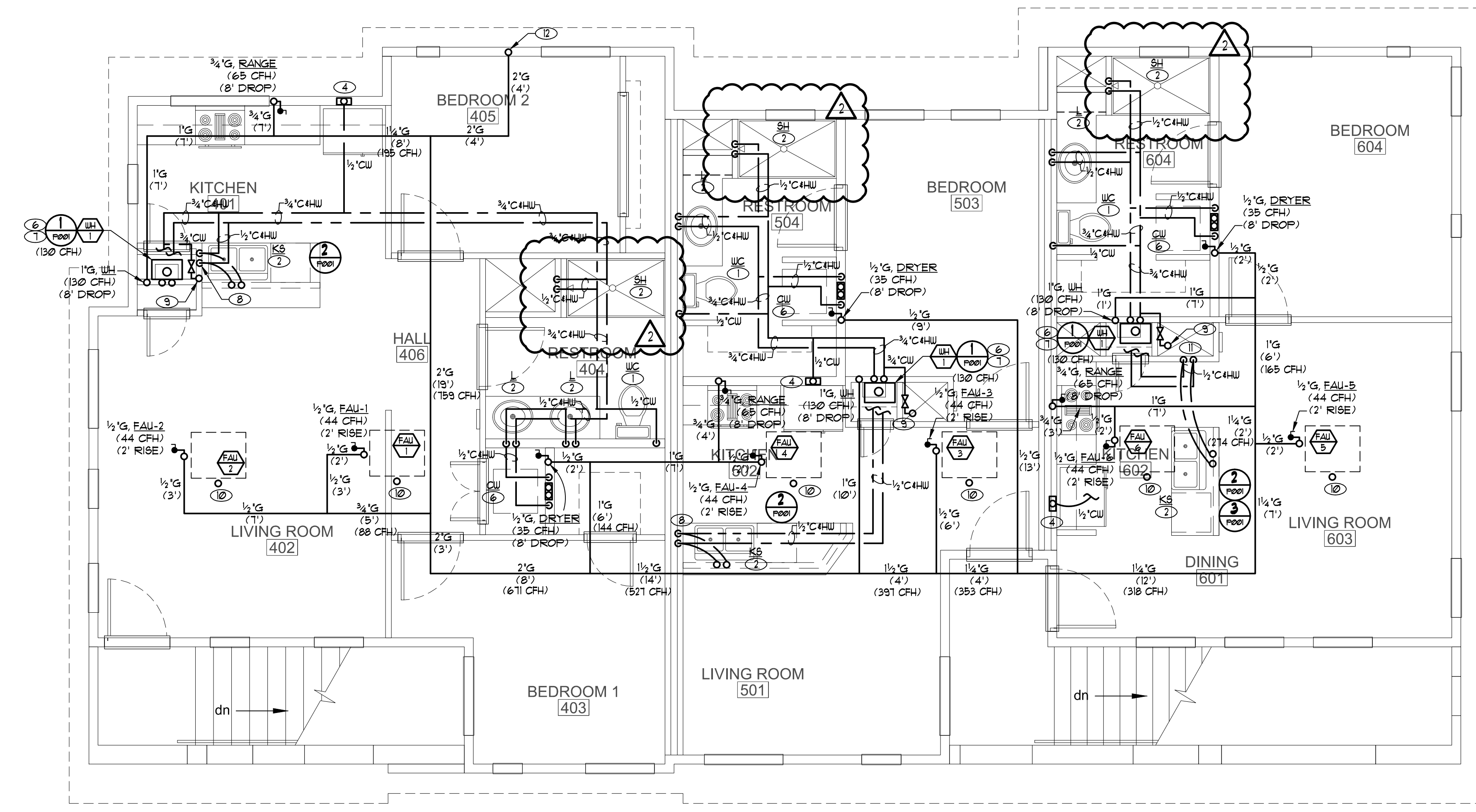
7010 Easy Wind Dr. Ste 200
Austin, TX 78752
512.899.3100

www.designnopa.com



251 S. TEXAS
HENDERSON, NEVADA

- NOTES:**
- ① WC, 1/2" CW.
 - ② L, SH, 1/2" C+HU.
 - ③ KS/DW, 1/2" C+HU.
 - ④ 1/2" CW TO REF. ICEMAKER WATER BOX.
 - ⑤ 1/2" C+HU TO CLOTHES WASHER BOX.
 - ⑥ 3/4" C+HU TO GAS TANKLESS WATER HEATER.
 - ⑦ ROUTE PRESSURE RELIEF LINE FULL SIZED TO THE OUTSIDE LANDSCAPE OR TO A CODE APPROVED LOCATION WITH 6" AIR GAP.
 - ⑧ ROUTE 1/2" C+HU DOWN IN WALL, THEN IN PONY WALL OVER TO KS.
 - ⑨ 1" CW UP FROM LOWER LEVEL. PROVIDE SHUT-OFF VALVE TO UNIT. PROVIDE ACCESS PANEL IF BEHIND WALL OR IN CEILING SPACE.
 - ⑩ 3/4" PRIMARY CONDENSATE DRAIN LINE TO NEAREST PLUMBING FIXTURE OR OTHER CODE APPROVED LOCATION UNIT IS PROVIDED WITH AN AUXILIARY DRAIN PAN SAFETY FLOAT SWITCH PER 2012 UPC TABLE B14.1 AND SECTION B14.3.
 - ⑪ ROUTE 1/2" C+HU DOWN IN FLOOR SPACE, THEN OVER TO ISLAND KS.
 - ⑫ 2" G, (954 CFH) UP FROM LOWER LEVEL. REFER TO SHEET P1001 FOR GAS CALCULATIONS.



NORTH
SECOND FLOOR - PLUMBING PLAN (WATER & GAS)
SCALE: 1/4" = 1'-0"
P102.1

2018 OPA Design Studio. All Rights Reserved. These designs / drawings are the sole property of the Architect, OPA Design Studio. They may not be reproduced in any form, by any method, for any purpose without previous written permission from the Architect.

JOB NO.:	201724-C
PHASE:	CD
DRAWN:	SO, LE
CHECKED:	SO
DATE:	10/22/2018

P102.1