

NO.	DATE	DESCRIPTION	BY
1	1-3-19	BUILDING DEPT. COMMENTS	DJH
2	1-3-19	OWNERS REVISION	DJH



7010 Easy Wind Dr. Ste 200
Austin, TX 78752
512.899.3100

www.designopa.com



251 S. TEXAS
HENDERSON, NEVADA

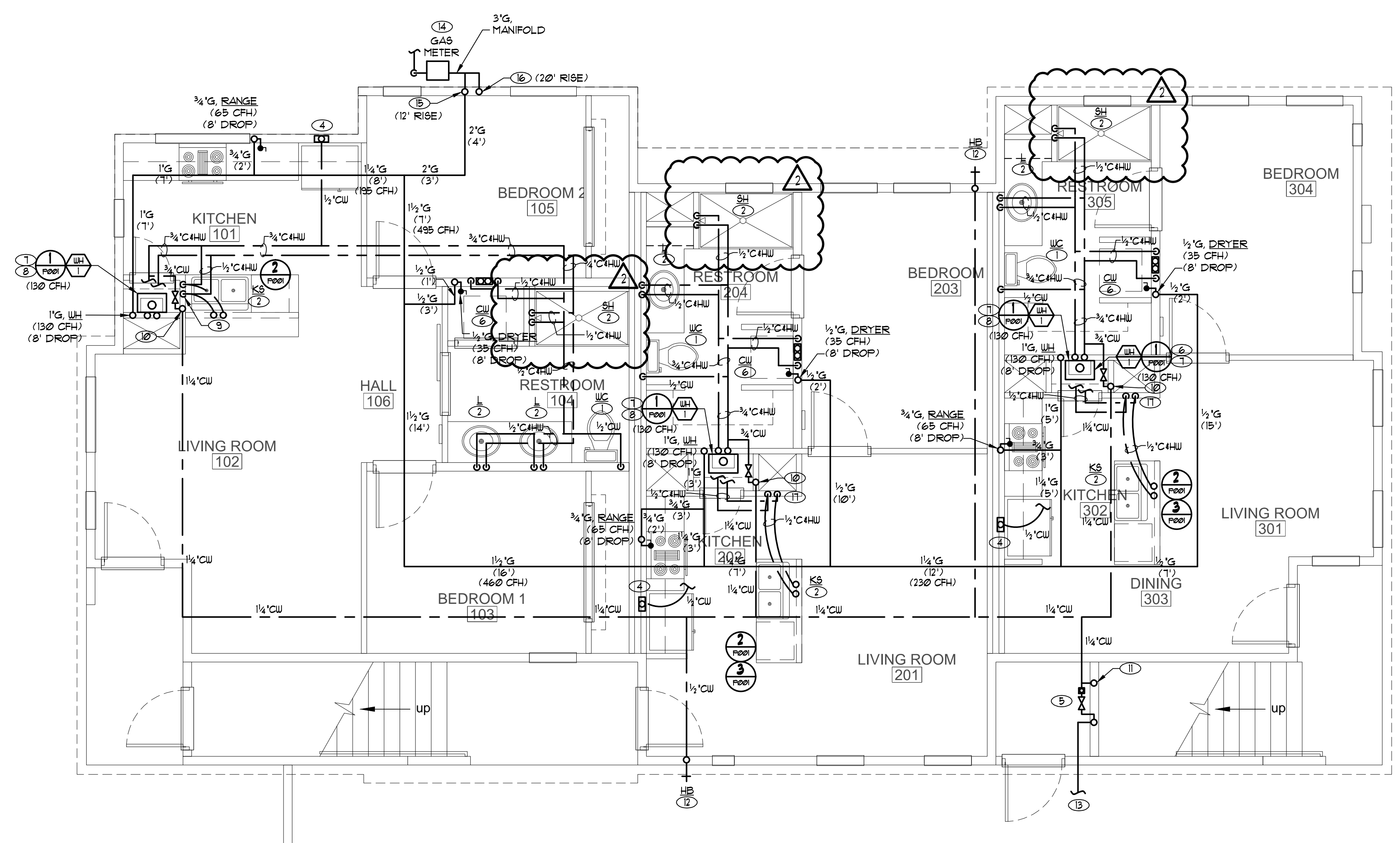
©2018 OPA Design Studio. All Rights Reserved.
These designs / drawings are the sole property of the architect, OPA Design Studio. They may not be reproduced in any form, by any method, for any purpose without previous written permission from the Architect.

JOB NO.:	201724-C
PHASE:	CD
DRAWN:	SO, LE
CHECKED:	SO
DATE:	10/22/2018

P101.1

NOTES:

- ① WC, 1/2" CU.
- ② L, SH, 1/2" CHHU.
- ③ KS/DU, 1/2" CHHU.
- ④ 1/2" CU TO REF. ICEMAKER WATER BOX.
- ⑤ PROVIDE LINE SIZED SHUT-OFF VALVE, PRESSURE REGULATOR SET TO 80 PSI AND BACKFLOW PREVENTER.
- ⑥ 1/2" CHHU TO CLOTHES WASHER BOX.
- ⑦ 3/4" CHHU TO GAS TANKLESS WATER HEATER.
- ⑧ ROUTE PRESSURE RELIEF LINE FULL SIZED TO THE OUTSIDE LANDSCAPE OR TO A CODE APPROVED LOCATION WITH 6" AIR GAP.
- ⑨ ROUTE 1/2" CHHU DOWN IN WALL, THEN IN PONY WALL OVER TO KS.
- ⑩ 1" CU ROUTE TO LOWER AND UPPER LEVELS, PROVIDE SHUT-OFF VALVES TO UNITS, PROVIDE ACCESS PANEL IF BEHIND WALL OR IN CEILING SPACE.
- ⑪ 1" CU ROUTE UP TO CEILING SPACE.
- ⑫ 1/2" CU TO HB, WITH VACUUM BREAKER.
- ⑬ CONTINUATION TO EXISTING CITY WATER SYSTEM. REFER TO CIVIL UTILITY SITE PLAN FOR EXACT LOCATION.
- ⑭ GAS METER SIZED FOR A 3" G, MANIFOLD, TOTAL LOAD OF 1644 CFH AND A TOTAL DEVELOPED LENGTH OF 111 FT. (125 FT. ROW) PER UPC TABLE 1216.2(1), 2012 UPC.
- ⑮ BRANCH (A)
2" G MAIN TOTAL LOAD OF 690 CFH AND A TOTAL DEVELOPED LENGTH OF 107 FT. (125 FT. ROW) PER UPC TABLE 1216.2(1), 2012 UPC.
- ⑯ BRANCH (B)
2" G MAIN TOTAL LOAD OF 954 CFH AND A TOTAL DEVELOPED LENGTH OF 111 FT. (125 FT. ROW) PER UPC TABLE 1216.2(1), 2012 UPC.
- ⑰ ROUTE 1/2" CHHU DOWN UNDER SLAB, THEN OVER TO ISLAND KS.



NORTH
FIRST FLOOR - PLUMBING PLAN (WATER & GAS)
SCALE: 1/4" = 1'-0"