

REV	DATE	DESCRIPTION
1	1-00-19	OWNER REVISION



7010 Easy Wind Dr. Ste 200
Austin, TX 78752
512.899.3100

www.designopa.com



**251 S. TEXAS
HENDERSON, NEVADA**
SECOND FLOOR - MECHANICAL PLAN

PRELIMINARY
NOT FOR
CONSTRUCTION
PROGRESS SET

©2019 OPA Design Studio. All Rights Reserved. These designs/drawings are the sole property of the Architect, OPA Design Studio. They may not be reproduced in any form, by any method, for any purpose without previous written permission from the Architect.

DATE	DESCRIPTION

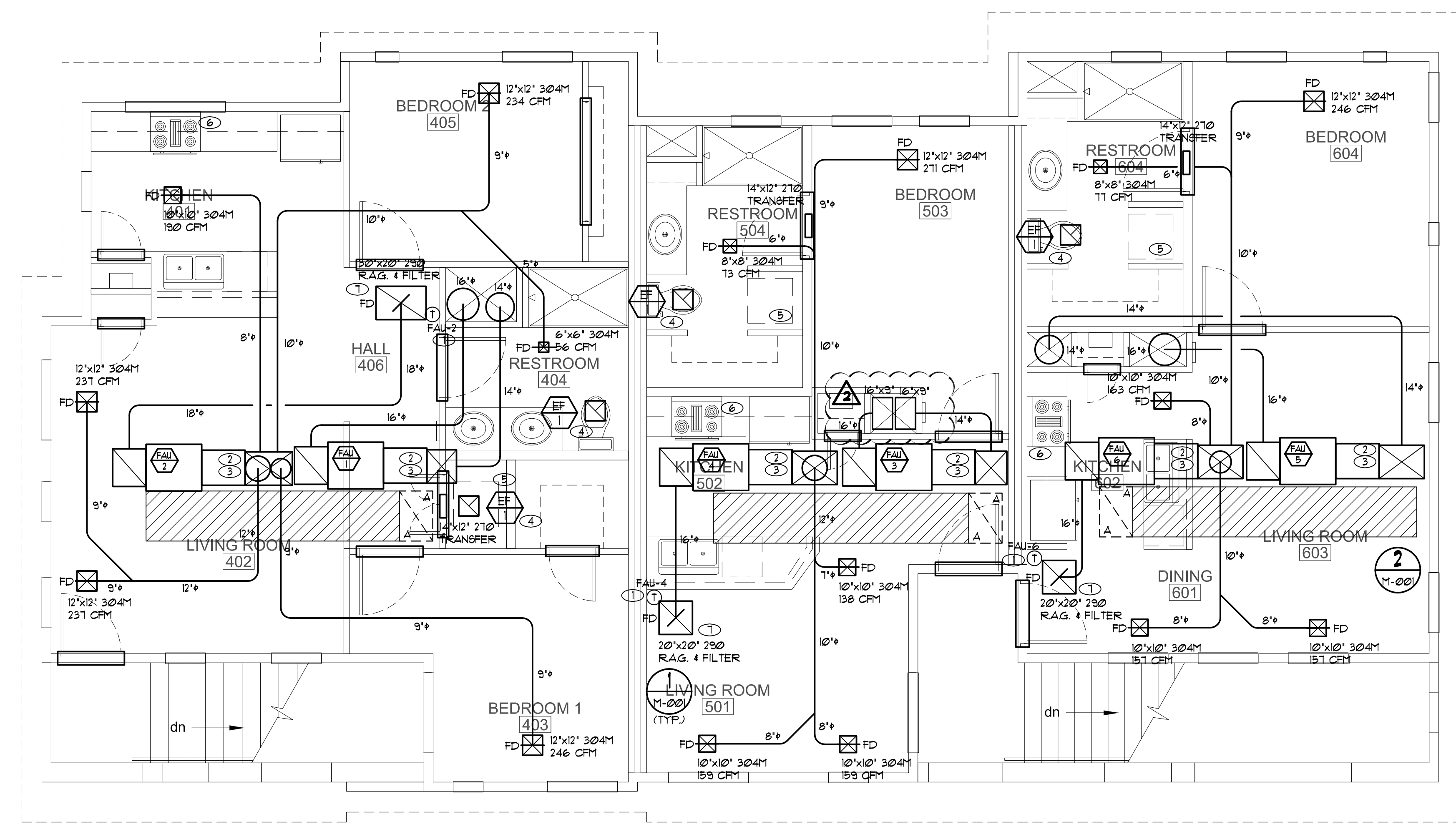
M-102

NOTES:

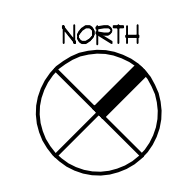
- ① PROVIDE 1 DAY PROGRAMMABLE THERMOSTAT.
- ② ROUTE PRIMARY CONDENSATE DRAIN LINE TO OUTSIDE AND TERMINATE 1" A.F.G.
- ③ SCHEDULE 40 PVC VENT AND COMBUSTION AIR INLET SIZING AND INSTALLATION PER MANUFACTURER'S REQUIREMENTS.
- ④ 4" EXHAUST DUCT TO OUTSIDE AT AN APPROVED CAP. MINIMUM 10 FT FROM NEAREST AIR INTAKE. EXHAUST FAN TO RUN CONTINUOUSLY TO SATISFY ASHRAE 62.2 WHOLE-BUILDING VENTILATION. (56 CFM + ((4+1) x 1.5) + (1,799 x 0.01))
- ⑤ 4" DRYER DUCT TO WALL OR ROOF CAP. LIMIT TO (2) 90° ELBOUS AND 14' OF DUCT.
- ⑥ KITCHEN HOOD EXHAUST SYSTEM TO BE INSTALLED PER MANUFACTURER'S REQUIREMENTS. EXHAUST DUCT ROUTE TO OUTSIDE TO TERMINATE TO AN AUTOMATIC OR GRAVITY DAMPER (100 CFM MINIMUM).
- ⑦ OA CONNECTION AT RAG. VOLUME CONTROL DAMPER SET TO CFM SHOWN IN CALCULATION ON SHEET M-001.

GENERAL NOTES:

1. ALL HEATING AND COOLING EQUIPMENT HAS BEEN SIZED IN ACCORDANCE WITH ACCA MANUAL J REQUIREMENTS.
2. ALL DUCTWORK HAS BEEN SIZED IN ACCORDANCE WITH ACCA MANUAL D REQUIREMENTS.
3. PROVIDE UNDERCUT ON ALL BEDROOM DOORS.
4. ROUTE ALL EXTERIOR PENETRATIONS AWAY FROM FRONT OF BUILDING.



G.C. TO COORDINATE WITH TRUSS DESIGNER TO ACCOMMODATE FANCOILS AND ACCESS AT THESE LOCATIONS



SECOND FLOOR - MECHANICAL PLAN

SCALE: 1/4" = 1'-0"

