

DATE:	1-00-19
DESCRIPTION:	FIRE COMMENTS/REVISE
BY:	



7010 Easy Wind Dr. Ste 200
Austin, TX 78752
512.899.3100

www.designopa.com



**251 S. TEXAS
HENDERSON, NEVADA**
FIRST FLOOR - MECHANICAL PLAN

PRELIMINARY
NOT FOR
CONSTRUCTION
PROGRESS SET

©2018 OPA Design Studio. All Rights Reserved.
These designs/crawlings are the sole property of
the Architect, OPA Design Studio. They may not
be reproduced in any form, by any method, for
any purpose without previous written permission
from the Architect.

DATE:	
DESCRIPTION:	
BY:	

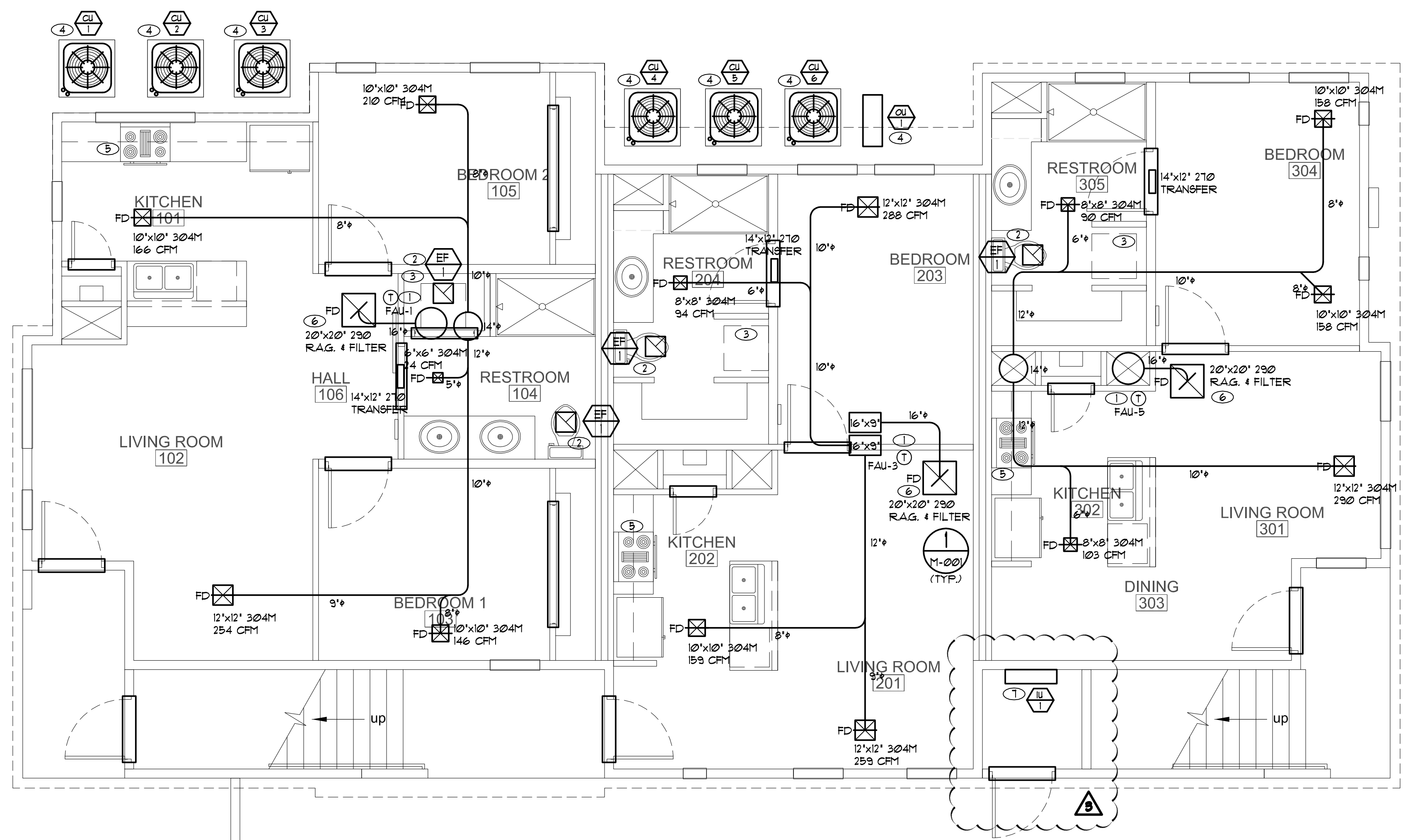
M-101

NOTES:

1. PROVIDE 1 DAY PROGRAMMABLE THERMOSTAT.
2. 4" EXHAUST DUCT TO OUTSIDE AT AN APPROVED CAP. MINIMUM 10 FT FROM NEAREST AIR INTAKE EXHAUST FAN TO RUN CONTINUOUSLY TO SATISFY ASHRAE 62.2 WHOLE-BUILDING VENTILATION. (56 CFM = ((4") x 1.5) + (1,799 x 0.01))
3. 4" DRYER DUCT TO ROOF CAP. LIMIT TO (2) 90° ELBOUS AND 14' OF DUCT.
4. PLACE CONDENSING UNIT ON A 4" THICK CONCRETE PAD. DO NOT ATTACH TO STRUCTURE.
5. KITCHEN HOOD EXHAUST SYSTEM TO BE INSTALLED PER MANUFACTURER'S REQUIREMENTS. EXHAUST DUCT ROUTE TO OUTSIDE TO TERMINATE TO AN AUTOMATIC OR GRAVITY DAMPER (100 CFM MINIMUM).
6. OA CONNECTION AT R.A.G. VOLUME CONTROL DAMPER SET TO CFM SHOWN IN CALCULATION ON SHEET M-001.
7. ROUTE PRIMARY CONDENSATE DRAIN LINE TO OUTSIDE AND TERMINATE 12" A.F.G.

GENERAL NOTES:

1. ALL HEATING AND COOLING EQUIPMENT HAS BEEN SIZED IN ACCORDANCE WITH ACCA MANUAL J REQUIREMENTS.
2. ALL DUCTWORK HAS BEEN SIZED IN ACCORDANCE WITH ACCA MANUAL D REQUIREMENTS.
3. PROVIDE UNDERCUT ON ALL BEDROOM DOORS.
4. ROUTE ALL EXTERIOR PENETRATIONS AWAY FROM FRONT OF BUILDING.



FIRST FLOOR - MECHANICAL PLAN
SCALE: 1/4" = 1'-0"
M-101