

NO.	DATE	DESCRIPTION	BY



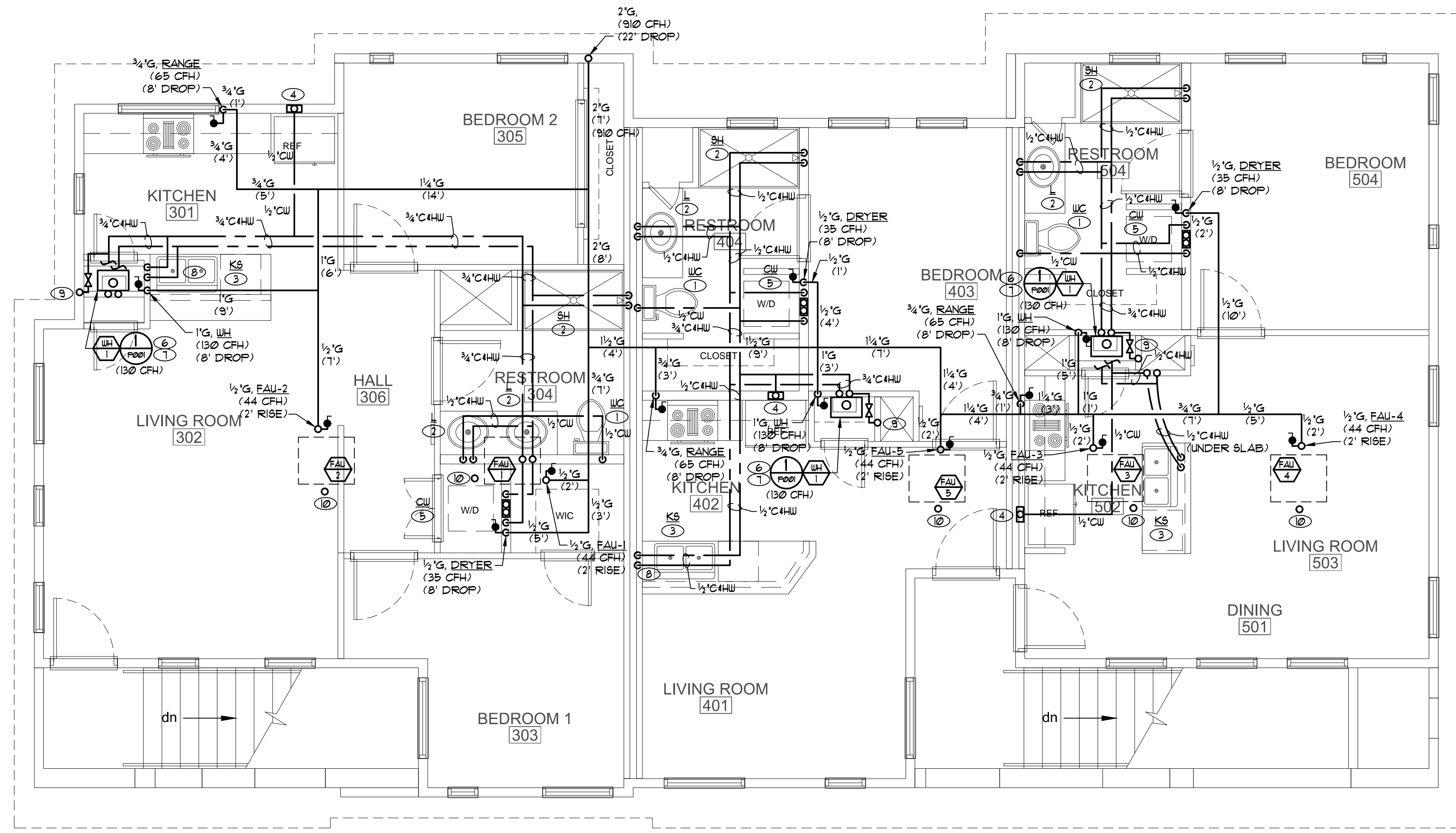
7010 Easy Wind Dr. Ste 200  
Austin, TX 78752  
512.899.3100

www.designopa.com



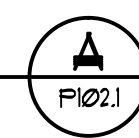
**NOTES:**

- ① WC, 1/2" CW.
- ② L, SH, 1/2" CHW.
- ③ KS/DW, 1/2" CHW.
- ④ 1/2" CW TO REF. ICEMAKER WATER BOX.
- ⑤ 1/2" CHW TO CLOTHES WASHER BOX.
- ⑥ 3/4" CHW TO GAS TANKLESS WATER HEATER.
- ⑦ ROUTE PRESSURE RELIEF LINE FULL SIZED TO THE OUTSIDE LANDSCAPE OR TO A CODE APPROVED LOCATION WITH 6" AIR GAP.
- ⑧ ROUTE 1/2" CHW, DOWN IN WALL, THEN IN PONY WALL OVER TO KS.
- ⑨ 1" CW UP FROM LOWER LEVEL. PROVIDE SHUT-OFF VALVE TO UNIT.
- ⑩ 3/4" PRIMARY CONDENSATE DRAIN LINE TO NEAREST PLUMBING FIXTURE OR OTHER CODE APPROVED LOCATION. UNIT IS PROVIDED WITH AN AUXILIARY DRAIN PAN SAFETY FLOAT SWITCH PER 2012 UPC TABLE 814.1 AND SECTION 814.3.



**SECOND FLOOR - PLUMBING PLAN (WATER & GAS)**

SCALE: 1/4" = 1'-0"



**150 COPPER ST.**  
**HENDERSON, NEVADA**

2018 OPA Design Studio. All Rights Reserved.  
These designs/drawings are the sole property of the Architect, OPA Design Studio. They may not be reproduced in any form, by any method, for any purpose without previous written permission from the Architect.

JOB NO.:	201724-C
PHASE:	CD
DRAWN:	SO, LE
CHECKED:	SO
DATE:	10/22/2018

**P102.1**