

NO.	DATE	DESCRIPTION



7010 Easy Wind Dr. Ste 200  
Austin, TX 78752  
512.899.3100

www.designopa.com



**150 COPPER ST.**  
**HENDERSON, NEVADA**  
SECOND FLOOR - MECHANICAL PLAN

PRELIMINARY  
NOT FOR  
CONSTRUCTION  
PROGRESS SET

© 2018 OPA Design Studio. All Rights Reserved.  
These design(s) / drawing(s) are the sole property of the Architect, OPA Design Studio. They may not be reproduced in any form, by any method, for any purpose without previous written permission from the Architect.

JOB NO.	201724-G
DATE	08/22/2018
PROJECT	150 COPPER ST.
CLIENT	

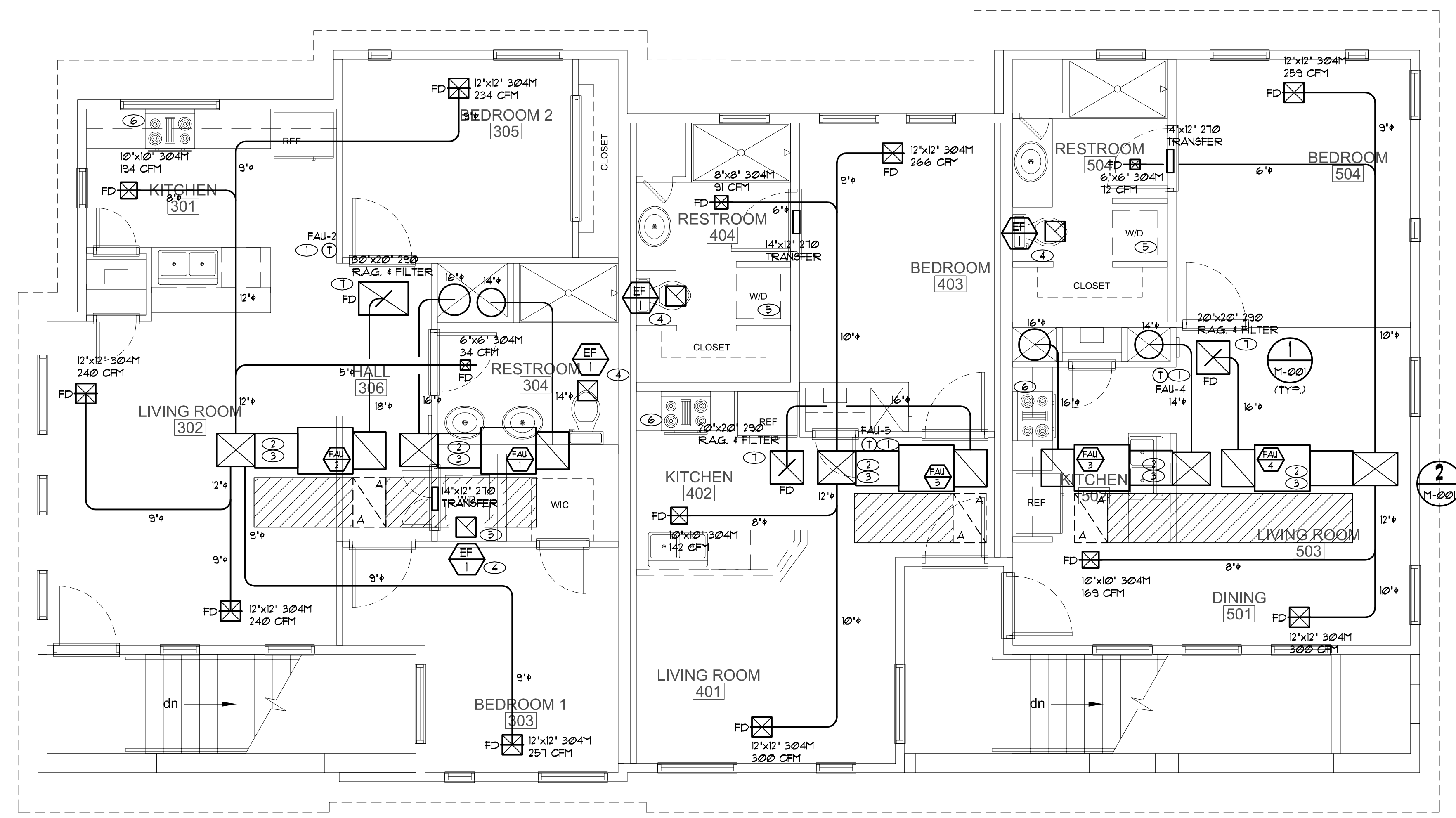
**M-102**

**NOTES:**

- ① PROVIDE 1 DAY PROGRAMMABLE THERMOSTAT.
- ② ROUTE PRIMARY CONDENSATE DRAIN LINE TO OUTSIDE AND TERMINATE 1" AFG.
- ③ SCHEDULE 40 PVC VENT AND COMBUSTION AIR INLET SIZING AND INSTALLATION PER MANUFACTURER'S REQUIREMENTS.
- ④ 4" EXHAUST DUCT TO OUTSIDE AT AN APPROVED CAP. MINIMUM 10 FT FROM NEAREST AIR INTAKE. EXHAUST FAN TO RUN CONTINUOUSLY TO SATISFY ASHRAE 62.2 WHOLE-BUILDING VENTILATION. (51 CFM = ((41) x 7.5) + (1925 x 0.01))
- ⑤ 4" DRYER DUCT TO WALL OR ROOF CAP. LIMIT TO (2) 90° ELBOWS AND 14' OF DUCT.
- ⑥ KITCHEN HOOD EXHAUST SYSTEM TO BE INSTALLED PER MANUFACTURER'S REQUIREMENTS. EXHAUST DUCT ROUTE TO OUTSIDE TO TERMINATE TO AN AUTOMATIC OR GRAVITY DAMPER (100 CFM MINIMUM)
- ⑦ OA CONNECTION AT R.A.G. VOLUME CONTROL DAMPER SET TO CFM SHOWN IN CALCULATION ON SHEET M-001.

**GENERAL NOTES:**

1. ALL HEATING AND COOLING EQUIPMENT HAS BEEN SIZED IN ACCORDANCE WITH ACCA MANUAL J REQUIREMENTS.
2. ALL DUCTWORK HAS BEEN SIZED IN ACCORDANCE WITH ACCA MANUAL D REQUIREMENTS.
3. PROVIDE UNDERCUT ON ALL BEDROOM DOORS.
4. ROUTE ALL EXTERIOR PENETRATIONS AWAY FROM FRONT OF BUILDING.



**SECOND FLOOR - MECHANICAL PLAN**

SCALE: 1/4" = 1'-0"



M-102